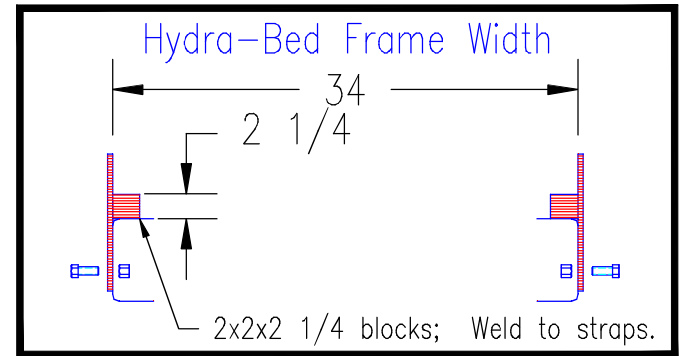


GENERAL INSTRUCTIONS AND CAUTIONS

Note: When welding, attach welder ground only to Hydra-Bed, not to truck frame. Use low-hydrogen rod or wire electrode. NEVER weld to the frame of the truck. Correct installation of the Level-Lok system assures Front to Rear and Side to Side leveling as well as Left to Right centering of the Hydra-Bed. Never obstruct factory overload spring mounting locations.

When drilling truck frame, do not damage any part of the braking, fuel or electrical systems.

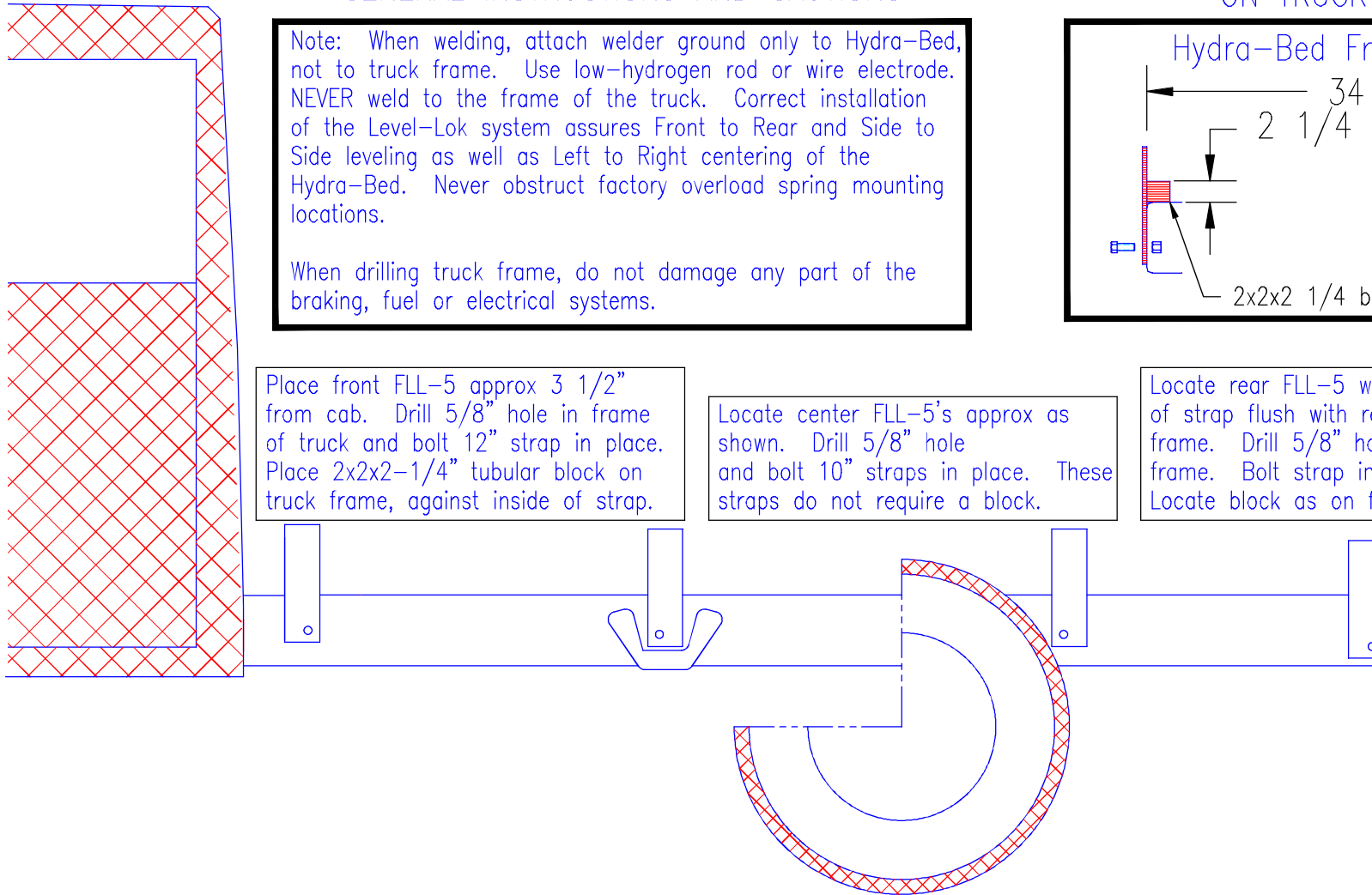
VIEW OF FRONT & REAR LEVEL-LOKS ON TRUCK FRAME



Place front FLL-5 approx 3 1/2" from cab. Drill 5/8" hole in frame of truck and bolt 12" strap in place. Place 2x2x2-1/4" tubular block on truck frame, against inside of strap.

Locate center FLL-5's approx as shown. Drill 5/8" hole and bolt 10" straps in place. These straps do not require a block.

Locate rear FLL-5 with rear edge of strap flush with rear edge of truck frame. Drill 5/8" hole in truck frame. Bolt strap in place. Locate block as on front strap.



FLL-5

1999 and Newer Ford
60" & 84" Cab to Axle Single/Dual Wheel

Kit contains 8 straps. Use 3 straps per side when mounting an HB 2X0 and 4 straps per side when mounting an HB 3X0 or longer Hydra Bed.